



ARHGEF10 Polyclonal Antibody

Catalog No	YP-Ab-16138
Isotype	IgG
Reactivity	Human;Monkey
Applications	WB;IHC;IF;ELISA
Gene Name	ARHGEF10
Protein Name	Rho guanine nucleotide exchange factor 10
Immunogen	The antiserum was produced against synthesized peptide derived from human ARHGEF10. AA range:339-388
Specificity	ARHGEF10 Polyclonal Antibody detects endogenous levels of ARHGEF10 protein.
Formulation	Liquid in PBS containing 50% glycerol, 0.5% BSA and 0.02% sodium azide.
Source	Polyclonal, Rabbit,IgG
Purification	The antibody was affinity-purified from rabbit antiserum by affinity-chromatography using epitope-specific immunogen.
Dilution	WB: 1/500 - 1/2000. IHC: 1/100 - 1/300. ELISA: 1/20000.. IF 1:50-200
Concentration	1 mg/ml
Purity	≥90%
Storage Stability	-20°C/1 year
Synonyms	ARHGEF10; KIAA0294; Rho guanine nucleotide exchange factor 10
Observed Band	152kD
Cell Pathway	centrosome,cytosol,
Tissue Specificity	Amygdala,Brain,Duodenum,Prostate,Testis,Uterus,
Function	disease:Defects in ARHGEF10 are the cause of slowed nerve conduction velocity (SNCV) [MIM:608236]. Affected individuals present a reduction in nerve conduction velocities without any clinical signs of peripheral or central nervous system dysfunction. SNCV inheritance is autosomal dominant.,function:May play a role in developmental myelination of peripheral nerves.,sequence caution:Cloning artifact.,sequence caution:Translated as Lys.,similarity:Contains 1 DH (DBL-homology) domain.,
Background	This gene encodes a Rho guanine nucleotide exchange factor (GEF). Rho GEFs regulate the activity of small Rho GTPases by stimulating the exchange of guanine diphosphate (GDP) for guanine triphosphate (GTP) and may play a role in neural morphogenesis. Mutations in this gene are associated with slowed nerve conduction velocity (SNCV). Alternative splicing results in multiple transcript variants. [provided by RefSeq, Apr 2015],



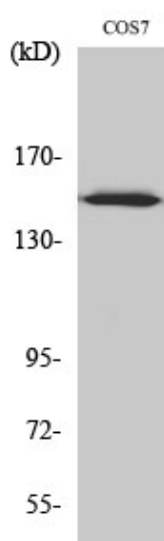
matters needing attention

Avoid repeated freezing and thawing!

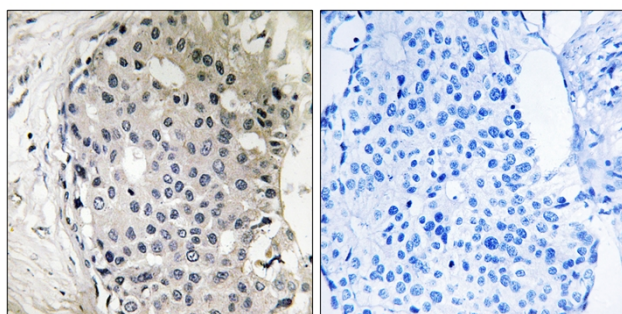
Usage suggestions

This product can be used in immunological reaction related experiments. For more information, please consult technical personnel.

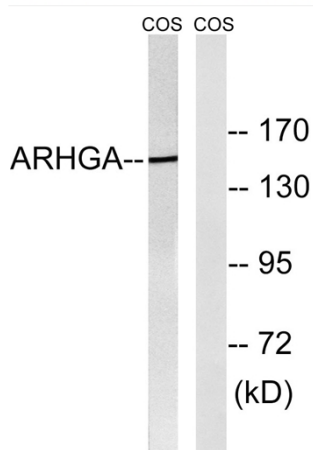
Products Images



Western Blot analysis of various cells using ARHGEF10 Polyclonal Antibody



Immunohistochemistry analysis of paraffin-embedded human breast carcinoma tissue, using ARHGEF10 Antibody. The picture on the right is blocked with the synthesized peptide.



Western blot analysis of lysates from COS7 cells, using ARHGEF10 Antibody. The lane on the right is blocked with the synthesized peptide.